

# ADAC TOTAL 24h-Rennen 2020



## Version 3 - Information 24h Teams/Participants

The legal basis is the 10th Corona Control Ordinance Rhineland-Palatinate (10. CoBeLVO) of 19 June 2020 as well as the official requirements and the current hygiene concepts of the state of Rhineland-Palatinate and of the competent authorities.

(Provisional – subject to changes. Adjustments upon the authorities' instructions and with regard to the evolving infection situation possible at any time)

In the following you will receive first advice / measures which must be respected for the participation of your race series as part of the 24h Race.

### 1. Protection and Hygiene Measures

#### IMPLEMENTATION OF THE EXISTING PROTECTION AND HYGIENE REQUIREMENTS

All persons participating in the event will receive the necessary instructions and information sheets regarding compliance with the protection and hygiene requirements at the Nürburgring in advance of the event (also online).

#### CONTACTS

Each person is required to reduce closer and longer contacts with other persons to a minimum and to keep the group of persons with whom closer or longer contacts exist as constant as possible (according to § 1 para. 1. CoBeLVO).

#### STAYING OUTDOORS

Wherever possible, meetings will not be held in closed rooms or closed tents but preferably outdoors (according to § 1 para. 1. CoBeLVO) or in tents with open side walls. Inside closed rooms which must be used (race offices, operations centres), sufficient ventilation must be provided (opening of windows, ventilation/air conditioning only with outside air).

#### DISTANCING RULES

Staying in public areas is only permitted if a minimum distance of 1.5 m to other persons is respected.

Exceptions to the requirement for physical distancing during the event apply to the following groups: groups of up to 10 persons, for participants, employees, service providers who have to work together in larger groups (larger than 10 persons) to fulfil their duties within the event (in accordance with § 1 Para. 2 No. 2 CoBeLVO).

The organisation, their staff and participants are obliged to wear nose-mouth masks on the event premises if the minimum distance cannot be maintained or in closed rooms.

Excluded from this are Race Control and the race management, as long as the persons are on their seats or in their offices. A nose-mouth mask must be worn when moving to and from the workplaces.

## SYMPTOMS OF A DISEASE

Persons with symptoms of a respiratory infection (especially coughing, cold symptoms, fever) are not permitted to enter the event area. The organiser and the circuit management are entitled to exclude persons with recognizable respiratory infections from their further participation in the event.

## CONTACT REGISTRATION

The contact traceability of all persons present during the event will be maintained for a period of 4 weeks. The contact data registered for all persons are "name, first name, address, telephone number".

The further collection of data for "participants, service providers and employees" as described below only applies if a complete electronic accreditation of all persons attending the event does anyway not take place.

**Participants' data:** For all teams and their family members, the organiser will ensure that a complete contact traceability of all persons present during the event is carried out. The organiser is responsible for the storage of the data and their deletion in conformity with the data protection provisions after four weeks as well as for the transmission of the data to the responsible health authorities upon request.

**Service provider data:** All companies and traders mandated with the performance of services on behalf of the teams and the Nürburgring 1927 GmbH & Co. KG are obliged to record the staff they employ during the event in full and with details of their working hours on the event site. In relation to the organiser and the Nürburgring 1927 GmbH & Co. KG, this must be confirmed in writing before the event.

**In order to enforce compliance with the distance and hygiene measures, participants and team members will be made aware via the monitors set up on the event premises by means of explanatory/advice videos and additional information boards. In addition, the security personnel and the marshals on duty will monitor compliance with the distance rules and the hygiene measures.**

## COVID-19 INFECTION PLAN

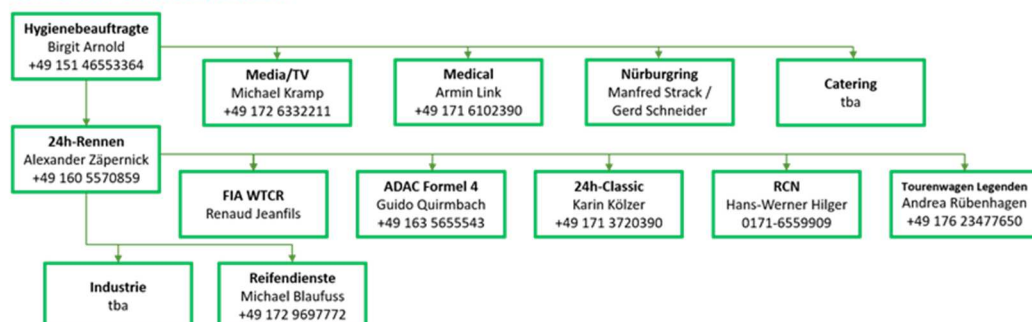
On-site test in suspected cases, ensuring the follow-up and isolation of symptomatic persons, uniform procedure in case of infection (**Appendix Infection Response Plan**), separate area in the Medical Center for isolation available, own RTW available for transfer to Mayen Hospital.

*If necessary, please follow the instructions for action (**Appendix Instructions for Action**).*

## HYGIENE OFFICERS

Hygiene Officers are nominated according to the units determined.

### HYGIENEBEAUFTRAGTE DER EINHEITEN



It is the responsibility of each motorsport team to keep their own areas clean, disinfected and ventilated. Commonly used items (e.g. tools, air pressure gauges etc.) must be disinfected on a regular basis. A safe distance must be maintained at the command posts.

Toilets will be thoroughly cleaned at regular intervals by the circuit operator or a company commissioned by him. Soap, disposable towels and hand gel will be available in sufficient quantities and the cleaning personnel must be provided with the necessary protective equipment.

In addition, the fact-sheet for motor sport teams/racing teams of the Nürburgring 1927 GmbH & Co. KG (**Appendix**) must be observed and complied with.

## 2. General Event Information

During the ADAC TOTAL 24h Race 2020, no spectators or guests are allowed in the paddocks, on the GP circuit and on the Nordschleife. Accordingly, no guest hospitalities are permitted.

### TICKETS AND ACCREDITATION

All persons present will be divided into units, which result from the paddock planning and layout, so that the individual series are basically separated. The contact of persons from different units shall be kept to a minimum.

- According to the current planning status, all 24-hour racing teams will receive the number of tickets according to the Supplementary Regulations:  
10 tickets "TOTAL-Lane" (valid until / in the working area).  
In addition, a maximum of 5 tickets "Pit" and 5 tickets "TOTAL-Lane" can be purchased.  
Tickets for the drivers according to the number of drivers entered.
- ADAC must be informed in advance of the total number of necessary (reduced to a minimum) tickets/accreditations.
- All tickets/accreditations are assigned personally and are not transferable. Each ticket is provided with a barcode which is scanned upon entry into the paddock.
- Each team will receive a list (open Excel file / **Appendix**) for ticket distribution within their team. All tickets are numbered and provided with a barcode. The team is responsible that this list is kept properly and made available to the organiser (Daniel Schönenberg) until 06.09.2020.
- Upon entry to the paddock, each person must fill in, sign and personally hand in a "self-disclosure" form (**Appendix = New**).
- The submission of the self-disclosure form will be indicated by a sticker on the ticket.

In order to receive access tickets, a list of participants must be submitted to the organiser. This applies to teams, industry, organisers and other service providers.

**Industry representatives** will be granted access to the premises provided that their services are necessary for the event. The number of persons must be limited to a necessary minimum and accordingly be applied for in advance.

### ACCESS AUTHORISATION

Maximum reduction of the required number of persons and exclusion of spectators and other guests, closure of all grandstands and strict restrictions of the access to the paddocks.

A distribution key for access authorisation will be determined by ADAC. The issue and distribution in form of plastic tickets will be carried out by ADAC in advance. When the delivery of the tickets, a declaration of consent/self-disclosure regarding the applicable hygiene measures and the current rules of conduct will be distributed. Any breach will result in the exclusion from the event.

## ACCESS CONTROL

Organisation of strict and contact-free access controls and their constant monitoring so that a complete and continuous traceability of presence is ensured. Upon entry, the signed self-disclosure form must be submitted to the security staff; this is documented by an additional sticker on the ticket.

Two (three for arrival and set-up) central points of entry to the premises are determined by the ADAC. By means of a barcode scanning system (barcode on each ticket), it is possible to check at any time how many people are present on the premises. In addition, the necessary contact details of all persons present are stored in this scan list.

## TEAM CAMPING

**Camping and motorhome areas** for racing teams and marshals will be located **in the outside area** on the parking lots.

In this connection, there will be a **further separation into different parking zones** for racing teams (car park B2), racing teams ADAC 24h-Classic (car park D1) and marshals (car park A2).

The implementation is carried out according to the currently valid regulations regarding hygiene and protection measures for gastronomy and accommodation facilities in the state of Rhineland-Palatinate. *The provision of toilet facilities and public showers will also be implemented in accordance with the current regulations and the Infection Protection Law.*

## TEAM CATERING

The implementation of any kind of catering is only allowed in compliance with the currently valid regulations with regard to **hygiene and protective measures for catering and accommodation facilities of the DEHOGA** of the state of Rhineland-Palatinate (**Appendix**).

In addition, the catering units on the grounds are operated by the Nürburgring (including Box 1, Box 77, ...).

*All team caterers will be registered in advance and corresponding personnel lists must be transmitted. For this purpose, all caterers must contact the organiser in advance to apply for the necessary access authorisations.*

## USE OF LOUNGES ABOVE THE PITS

*The use of the lounges above the pits will be based on the already approved concept of the Nürburgring for CONTACT-LESS HOSPITALITY (based on the hygiene and protection measures for catering and accommodation facilities of DEHOGA Rheinland-Pfalz). The corresponding concept can be requested from the Nürburgring 1927 GmbH & Co. KG by the lounge tenants.*

*In this exceptional case, the lounge tenants have the opportunity to receive **guests**, which is otherwise generally not permitted. In this case, the **isolated group of guests will be separately guided to the outdoor guest area via the BMW bridge**. The guests will also receive a personalised ticket for a contact-less scan at the entrance and for the sole access to the access balcony and the lounges. Thus, **tracking is possible at any time**.*

*Moreover, **additional controls will be set up on the access balcony and the exits to the paddocks** so that access to the event area is not possible for these guests.*

*Persons who are authorized to access the event area may also use the lounges above the pits as a lounge area. The renter is responsible for compliance with the current distancing and hygiene rules. This includes service personnel and other service providers. Work passes issued by NG are not valid.*

***On the access balcony, the correct wearing of face masks are mandatory without exception, as (external) guests and persons accredited for the event may come together here.***

*For the access balcony area, an additional ticket "Lounge-Area" is required, as in previous years. Tenants can obtain the lounge area tickets via the Nürburgring. Teams shall obtain these tickets or additional tickets from the organiser.*

### 3. Running of the Event

#### TIMETABLE

See **Appendix = New**

#### Support Series:

FIA WTCR / ADAC Formula 4 / Rundstrecken Challenge / ADAC 24h-Classic / Touring Car Legends

Amongst others, the following measures will not be organised in 2020:

- No Adenauer Racing Day
- No exhibition and trade fair area in the Ring°Boulevard
- No event arena in the historic paddocks
- No drift challenge
- No hospitality and event zones or fan activities
- No class prizegiving ceremonies
- No bus shuttle service around the Nordschleife

#### ARRIVAL / CHECK-IN IN THE GRAF-ULRICH-HALLE

A **schedule for arrival and departure will be prepared according to fixed times for each race series** and the set-up will be spread over different days as far as possible. For the participants of the 24h race, the set-up will be spread over two days to avoid large crowds of people and staggered entry times will be assigned per day. The set-up will be divided in two rows and five blocks per row.

The teams and racing services shall place their trucks/tents or other structures on allocated areas in the paddocks. It is **compulsory to wear nose-mouth masks until arrival at the final parking position in the paddocks.**

The **check-in for the 24h participants** (collection of the necessary documents, tickets, etc.) has been **moved away to the Graf-Ulrich Halle in Nürburg.** This hall is sufficiently large and can be **permanently ventilated** due to its design (rolling doors). In addition, a **one-way traffic control system** will be implemented.

At the entry points to the paddocks, the health state is checked by means of an visual inspection and, if necessary, by questioning. A temperature measuring device will be kept available in these areas.

**If there are signs of symptoms, the COVID-19 Infection Response Plan will come into effect.** An isolation area (Medical Centre) will be set up to admit suspected persons with symptoms. The COVID-19 Infection Response Plan regulates the further procedure of the isolation.

The arrival of the participants and teams starts on Monday afternoon with the access and subsequent set-up in the paddocks and the pits (exclusively for teams of the 24h race from Tuesday, 10:00 a.m.). In order to **avoid a traffic jam upon arrival,** the 24h teams as well as the support series will be given staggered time slots as described above.

**The complete area is provided with fences and can only be accessed through three entrance points.** The **security personnel at the access roads and in the paddocks** will ensure a controlled and regulated set-up and **monitor compliance with the distance rules and hygiene measures.**

**Disinfectant stations** will already be set up in the access area (**Dorint access and Lindner access**).

Only persons with a corresponding **access/entry authorisation**, which is recorded **electronically and contact-free**, may enter the paddock. For this purpose, all teams and service providers must submit a list of their personnel with all contact details of participants, employees and staff in advance.

Compliance with the access restrictions will be guaranteed by the organiser as well as the circuit management and any infringements will result in the immediate removal from the event area and, if necessary, the exclusion of the entire team.

### **Arrival and set-up of the racing series**

Arrival of the racing series is scheduled as follows:

24-Race	Monday, 21.09.2020 and Tuesday, 22.09.2020
FIA WTCR	Tuesday, 22.09.2020
ADAC Formula 4	Wednesday, 23.09.2020
24h-Classic	Wednesday, 23.09.2020
Touring Car Legends	Thursday, 24.09.2020 (Paddocks 3/outside area)
RCN	Wednesday, 23.09.2020 / Thursday, 24.09.2020 (Paddocks at the Nordschleife access / Exterior area Döttinger Höhe)

**The series must start dismantling after their last race and to leave the paddocks so that the number of people present at the same time is kept to a minimum throughout the event.**

### **SET-UP / PADDOCKS**

Various areas, also beyond the main paddocks itself, are used as the overall paddocks and the individual units are separated accordingly. **Moreover, the Mercedes Arena will be separated from the race track and also used as an additional paddock area.**

Any and all persons present will be assigned to the units which result from the paddock planning and layout, so that the individual series are basically separated. The contact of persons from different units shall be kept to a minimum.

**Obligation to comply with the distance rules (minimum distance 1.5 metres).** If the minimum distance cannot be maintained or in closed rooms, the wearing of a nose-mouth mask is mandatory. Excluded from this are Race Control and the race management, as long as the personnel is on their seats or in the offices. A nose-mouth mask must be worn when moving to and from the workplaces.

Moreover, **any avoidable physical contact must be avoided.**

It is the responsibility of each motorsport team to keep their own areas clean, disinfected and ventilated. Commonly used items (e.g. tools, air pressure gauges etc.) must be disinfected on a regular basis. A safe distance must be maintained at the command posts.

Provision of hand disinfectant *by the teams* (dispensers), if possible, in front of or in each room and at the entrance to each team area (applies to both the team garages and the team tents).

Toilets will be thoroughly cleaned at regular intervals by the circuit operator or a company commissioned by him. Soap, disposable towels and hand gel will be available in sufficient quantities and the cleaning personnel must be provided with the necessary protective equipment.



## ADMINISTRATIVE CHECKS

One representative of the motorsport team reports to the place of administrative checks on behalf of all his drivers. At administrative checks, a one-way traffic regulation is to be set up. Further information will be provided with the entry confirmation.

Use of plexiglass partition screens for administrative contacts (check-in, administrative checks, fuel deposit).

Floor markings will be applied at critical points as an orientation aid to maintain the safety distance.

## SCRUTINEERING

The **special regulations** for scrutineering of the 24h Race participants can be found in the **Appendix**.

**Scrutineering of the support series is carried out in the respective paddock areas** in order to reduce the movement within the paddocks to a minimum.

## DRIVERS BRIEFING

The Drivers Briefing will be held in written form and copies in sufficient numbers will be given to a representative of the motorsport team for all of his drivers. The representative of the motorsport team confirms receipt of the documents by his signature and guarantees that all participants have read and understood the document. The Race Director is available for any queries via the electronic means of communication.

In addition, the presentation will be made available online.

The team managers briefing will not take place.

Due to the low number of participants in the support series FIA WTCR and ADAC Formula 4, these briefings are scheduled to take place in the sufficiently dimensioned Ring°Kino.

## COMMUNICATION WITH RACE CONTROL

### Stewards

A maximum of 2 DMSB Stewards will be present in the Stewards' meeting room from the beginning of administrative checks.

The meeting room of the Stewards is an office for teams and drivers who will have access to this office when called in. The room has two doors for separate entrance and exit and a one-way traffic system can be implemented. Before entering the room, all participants must use the hand sanitizers. A disinfectant dispenser is set up in front of the room.

The oral hearing of any parties and witnesses, if necessary, must be carried out using transparent partition screens.

The oral hearing of witness statements shall be replaced, as far as possible, by obtaining or presenting the written testimony of witnesses.

### Race Control

The Race Control is a room with restricted access that can only be entered with access codes. A disinfectant dispenser is available at the entrance area.

The Race Director communicates mainly via team radio and screen messages. *The communication channels are summarized in the Appendix (already available online).*

Necessary documents are sent, as far as possible, via newsletter system or e-mail or posted on the 24h participants' website.

## STARTING GRID

All race series have a **shortened starting grid**.

**Only team members and officials** have access to the respective starting grid. Guests are not allowed on any starting grid. *A maximum of 6 assistants/team members + drivers per vehicle will be admitted on the starting grid. The organiser will issue separate armbands for this purpose.*

In addition, the personnel of the motor sports teams on the starting grid will also be reduced to a minimum.

**Access to the starting grid** will also be **staggered** in order to avoid the teams coming together.

No use of grid girls or other show elements.

*On the entire starting grid, all persons must wear face masks covering nose and mouth.*

## WORKING IN THE PITS AND IN THE PIT LANE

All garages are cleaned in advance by NG. Disinfectant dispensers are available at the entrance to each garage. The 24h race teams will move into the pits from Tuesday, 10:00 am.

The 24h teams shall, as far as possible, leave the pits when not servicing a vehicle and go to the team area in the paddocks or reduce the number of people to a necessary minimum. The individual pits are not be used as a lounge. *The teams must therefore plan a lounge area in their registered area inside the paddocks.*

In the entire area including the command post at the pit wall, the **wearing of a nose-mouth mask is mandatory**.

**30 boxes are available for the 24h participants**. If possible, the **rolling gates of the pits** should be **kept open on both sides**.

In addition to the necessary drivers (for a driver change), a **maximum of 12 persons per vehicle are permitted for the service** and may thus be simultaneously in this area.

The other support series do not use the pits.

During the practice sessions and races, only those **persons** who are admitted according to the respective regulations **are allowed in the working area of the pit lane** (incl. command stand / pit wall).

**An exception to the distance requirement applies in the pits as well as in the working area of the pit lane (according to § 1 para. 2 number 2 CoBeLVO) for participants, employees, service providers, who have to work together in larger groups (more than 10 persons) to fulfil their duties within the event.**

## PRIZEGIVING / CLASS PRIZEGIVING

The **cup presentation will only be carried out for the purpose of TV production** on the permanent prizegiving podium. The personnel necessary to hand over the awards will be reduced to a minimum.

The **gathering of team members** at the place of the ceremony is **prohibited**.

All cups will in advance be placed on the respective podium. Each participant will pick up his cup himself after being called.

*There shall be **no other kind** of show elements.*

There will be **no class prizegiving ceremony** in the Bitburger Event after the event.

*A trophy delivery post will, however, be issued in **Box 2** for the class winners and classified crews. The teams will be informed accordingly at a later date.*

#### **DISMANTLING AND DEPARTURE**

**The teams are required to start dismantling immediately after the race and to leave the paddocks so that the number of people present at the same time is kept to a minimum throughout the event.**

#### **FERRIS WHEEL**

*The Ferris wheel in the paddocks will also be set up this year. In the context of TV broadcasting, the Ferris Wheel has been established as a key visual in recent years.*

*Basically, all persons who are legitimated for the event and thus for paddock access shall have the **possibility to take a ride on the wheel**. For this purpose, the operator of the wheel has submitted a **corresponding hygiene and operating concept** to the authorities for approval.*

Version 3/24.08.2020